

# LBH1796AS/X73223(P/N:40177344)

## Polo-shirts Single Placket Sewing Device

Computer-controlled, High-speed, Buttonholing Machine (220mm presser type)



Process  
time

16<sub>sec/pcs</sub>

Daily  
production

5.2 times

## Productivity

■ Increased productivity is ensured!

In case of using 2units LBH-1796A,

The machine carries out a series of placket setting processes at 16 sec/pcs.

It achieves 5.2 times as productive as general-purpose machines.

Attach placket process	General-purpose machine	Placket Sewing Device/2units	
Mark front placket position	11sec	84 sec	16 sec
Sew front placket	29sec		
Cut placket center	27sec		
Mark placket position	17sec		
Daily Production	285 pcs	1500 pcs	

This device is able to place a placket on garment body while the machine is still engaged in the sewing of the current placket. This means higher productivity can be achieved simply with 2 machines.

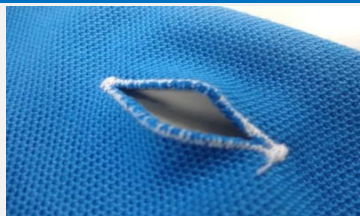
※Condition: Hours of work: 8 hours, Allowance rate: 20%

## Stable Quality



This machine achieves not only contribute productivity, but also enhance seam quality with ease.

## Button Hole



Furthermore, this device can be used as buttonholing machine which is original function of this device. It means, you are able to use two functions with one sewing machine. Thereby, it eliminates both of the waste of resource and unwanted extra costs.

Model name	LBH-1796A
Max. sewing machine	For Placket 2,000sti/min Normal 3,600sti/min When the non-lubricated hook(optional)is used: 3,300sti/min
Size of cloth cutting knife	6.4~25.4mm
Bartacking width	Max. 5.0mm
Buttonhole length	Max. 220mm
Lift of the work clamp	Parallel lifting 6mm
Number of standard patterns	31 patterns
Number of patterns that can be input	Max. 99 patterns
Needle	DP×5(#11J)#11J~#14J